




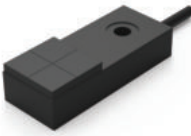




# Mini-square

## Pre-wired

Appearance					
Mounting	Unshielded	Unshielded	Unshielded	Unshielded	
Housing size	E06	E07	E08	E09	
Sensing distance	1mm ± 15%	1mm ± 15%	2.5mm ± 10%	2.5mm ± 10%	
Housing material	Plastic				
Operating voltage	10~30V DC(Ripple < 10%)				
Voltage drop	< 1.5V				
Load Current , Max	100mA		150mA		
Current consumption	< 10mA				
Leakage current	< 0.01mA				
Switch frequency	500Hz		800Hz		
Repeat accuracy	< 5% (Sr)		< 1% (Sr)		
Hysteresis	< 15% (Sr)				
Sensing surface material	PC				
Operating Temperature	-25°C~+75°C				
Protective circuit	-		Short circuit		
Degree of protection	IP67				
Model No.	NPN Normally open	TEN06-01 <sup>NO</sup>	TEN07-01 <sup>NO</sup>	TEN08-2.5 <sup>NO</sup> <sup>HOT</sup>	TEN09-2.5 <sup>NO</sup> <sup>HOT</sup>
	Others	<sup>NO</sup> :NPN Normally open	<sup>NC</sup> :NPN Normally closed	<sup>PO</sup> :PNP Normally open	<sup>PC</sup> :PNP Normally closed

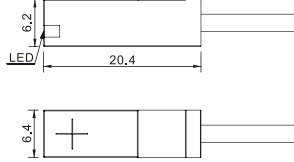
Appearance					
Mounting	Unshielded	Unshielded	Unshielded	Unshielded	
Housing size	E10	E12	E15	E16	
Sensing distance	2.5mm/4mm ± 10%	4mm ± 10%	5mm/8mm ± 10%	5mm/8mm ± 10%	
Housing material	Plastic				
Operating voltage	10~30V DC(Ripple < 10%)				
Voltage drop	< 1.5V				
Load Current, Max	150mA				
Current consumption	< 10mA				
Leakage current	< 0.01mA				
Switch frequency	800Hz/200Hz		1KHz/500Hz		
Repeat accuracy	< 5% (Sr)		< 1% (Sr)		
Hysteresis	< 15% (Sr)				
Sensing surface material	PC				
Operating Temperature	-25°C~+75°C				
Protective circuit	Short circuit				
Degree of protection	IP67				
Model No.	NPN Normally open	TEN10-2.5 <sup>NO</sup> /TEN10-04 <sup>NO</sup>	TEN12-04 <sup>NO</sup>	TEN15-05 <sup>NO</sup> /TEN15-08 <sup>NO</sup>	TEN16-05 <sup>NO</sup> /TEN16-08 <sup>NO</sup>
	Others	<sup>NO</sup> :NPN Normally open	<sup>NC</sup> :NPN Normally closed	<sup>PO</sup> :PNP Normally open	<sup>PC</sup> :PNP Normally closed

# Mini-square

## Dimensions (Unit:mm)

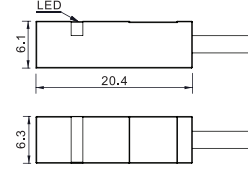
E06

TEN06-01□□



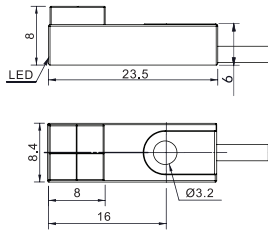
E07

TEN07-01□□



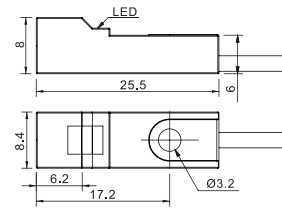
E08

TEN08-2.5/03□□



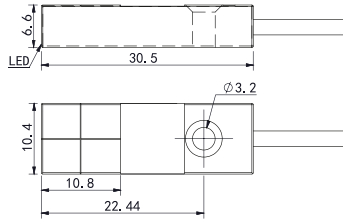
E09

TEN09-2.5/03□□



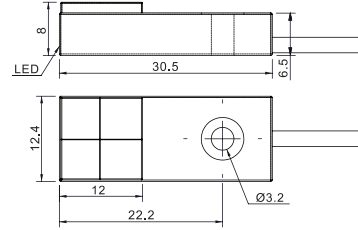
E10

TEN10-2.5/04□□



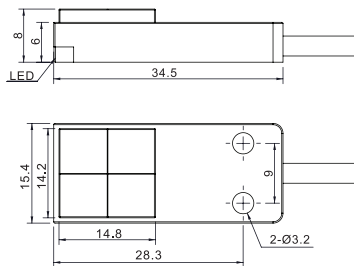
E12

TEN12-04□□



E15

TEN15-05/08□□



E16

TEN16-05/08□□

