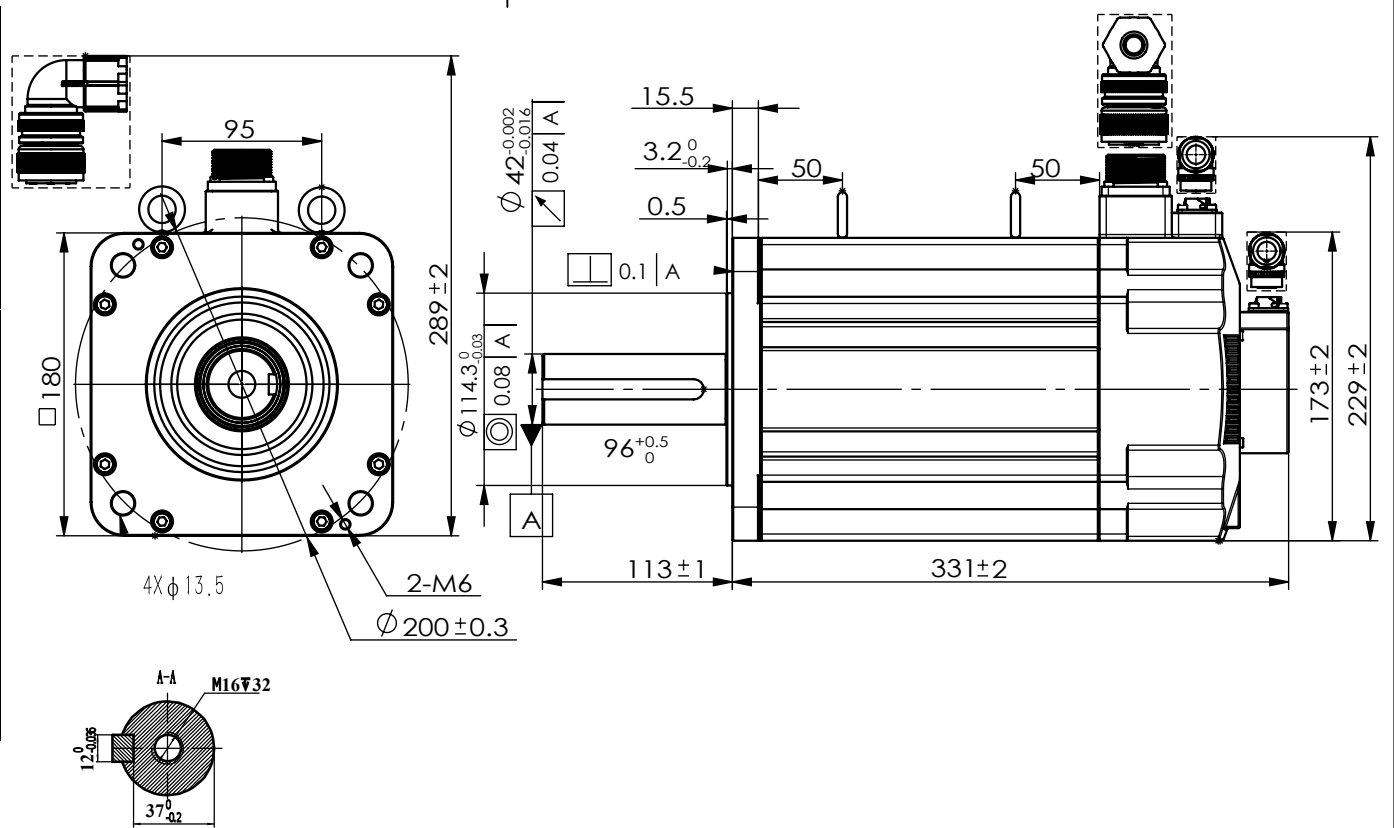


Rated Voltage (Vac)	400
Rated Power (w)	7500
Rated Torque (N.m)	48
Peak Torque (N.m)	119
Rated Speed (rpm)	1500
Peak Speed (rpm)	3000
Rated Current (Amp)	25.7
Peak Current (Amp)	64
Torque Const (N.m/Amp)	1.86
Back EMF Const (V/krpm)	123
Resistance (Ω)	0.16
Inductance (mH)	4.3
Inertia (kg*m ² *10 ⁻⁴)	100.7
Poles	10
Encoder type	23bit optical
IP rating	IP65
Mass (Kg)	37

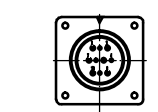


Power connector



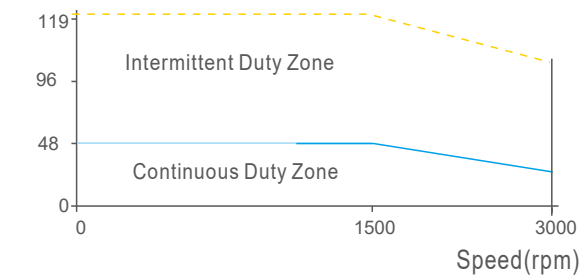
Wiring details of Power cable connector				
Pos	A	B	C	D
Signal	U	V	W	PE
Color	red	yellow	blue	Yel/Gre

Encoder connector

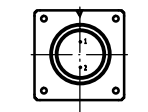


Wiring details of encoder cable connector										
Pos	1	2	3	4	5	6	7	8	9	10
Signal	/	5V	0V	SD+	SD-	E+	E-	/	/	PE
Color	/	red	black	blue	yellow	brown	white	/	/	shield

Torque(Nm)



Brake connector



Brake connector			
Pos	1	2	3
Signal	0V	24V	/
Color	/	/	/

GMTCNT

S2M180F7500BH
180 mm, medium inertia, 7500w servo motor
23bit optical encoder, brake
MS10