



G2 SERIES SAFE AREA ONLY

A full line of FLOMEC G2 Series Turbine Meters are available in a variety of housing materials. Rugged and dependable, the G2 Series offers:

- Stainless Steel for most non-volatile products
- Aluminum for non-volatile petroleum-based products
- PVDF for aggressive chemicals

FEATURES / BENEFITS

- Meter is designed for thin fluids < 100 cP
- Modular design allows for use with Output Modules, Sensors and Remote Display Kits
- 2 Totals (Batch Total = Resettable, Total = Non-Resettable); Rate of Flow, Factory calibrated in gallons or litres. Field calibratable. Includes non-volatile totals.
- High accuracy meter
- Internal parts are simple to replace for easy maintenance
- AAA Alkaline battery life: 2 years

PRODUCT CONFIGURATION

1 PRODUCT IDENTIFIER:

G2 = Industrial Grade Flowmeters

2 TURBINE MATERIAL:

S = Stainless Steel
 A = Aluminum
 P = PVDF (1/2 in. & 1 in. only)
 H = High Pressure Stainless Steel
 X = Electronics only (For metal meters)
 Z = Electronics only (For plastic meters)

3 TURBINE SIZE:

05 = 1/2 in. 15 = 1-1/2 in.
 07 = 3/4 in. 20 = 2 in.
 10 = 1 in.

4 FITTING TYPE:

N = NPT (Female)
 I = ISO (Female) BSPT (ISO 7 Designation is RC)
 F = 150# ANSI Flange (Available on S10, S15 & S20 only)
 T = Tri-Clover® Fitting (Available on S05, S07, S10, S15 & S20 only)
 X = No Turbine Body

5 ELECTRONIC CHOICE:

Computer Display, Meter Mounted
 Q9 = Q9 2-Button Computer
 Q1 = Q9 2-Button Computer, Vertical Mount (90° Adapter)
 Computer Display & Module, Meter Mounted
 P9 = Q9 2-Button Computer w/Pulse Out Module, includes External Power and 10 ft. of Cable
 42 = Q9 2-Button Computer w/4-20mA Module and 10 ft. of Cable
 Module, Meter Mounted (No Display)
 PO = Pulse Out (Unscaled) Conditioned Signal Module w/Cable
 QSI Options, Meter Mounted (No Display)
 81 = QSI Version 1 (Scaled Pulse, RS485 [Modbus or BACnet], BTU Calculator, Bluetooth®)
 82 = QSI Version 2 (Scaled Pulse, BTU Calculator, Bluetooth®)
 83 = QSI Version 3 (Scaled Pulse, 4-20 mA, Bluetooth®)
Retrofit Computer Kit (Display Only)
 R9 = Q9 2-Button Computer Retrofit Kit (Replaces Q9 Display)
 No Electronics - Turbine Only
 XX = No Electronics - Turbine Only

6 CALIBRATION OF COMPUTER / DISPLAY:

GM = Gallons Per Minute (Gallons Default)
 LM = Liters Per Minute (Litres Default)
 XX = No Calibration

7 PACKAGING:

V = 05 Thru 10 Turbines, Turbine Only or w/Q9 Electronics
 05 Thru 20 Electronics Only (Q9 Replacement Kit or R9 Retrofit Kit)
 W = 15 & 20 Turbines, Turbine Only or w/Q9 Electronics
 05 Thru 10 Turbines w/Q1 Electronics
 X = 15 Thru 20 Turbine w/Q1 Electronics
 05 Thru 20 Turbines w/P9, 42, PO Electronics
 05 Thru 20 Electronics Only (P9 or 42 Electronics)
 Y = 10 Turbines with ANSI Flange Turbine Only or w/Q9, Q1, P9, 42, PO Electronics
 Z = 15 & 20 Turbines with ANSI Flange Turbine Only or w/Q9, Q1, P9, 42, PO Electronics
 10 Turbines with ANSI Flange w/81, 82, & 83 Electronics
 F = 05 Thru 20 Turbines w/81, 82, & 83 Electronics
 G = 15 & 20 Turbines with ANSI Flange w/81, 82, & 83 Electronics

APPLICATIONS

- Batching
- Blending
- Water
- Industrial fluids
- Plating solutions
- Ammonium
- Food and beverage processing
- Monitoring clean fluids
- Plant process water
- Chemical feed lines
- Harsh chemicals (sulfuric acid and bleach)

SPECIFICATIONS

Fitting Type:	NPT or ISO (Female) BSPT* (*ISO 7 designation is RC)		
	150# ANSI (Stainless Steel only)		
	Tri-Clover * (Stainless Steel only) - Clamp size is one size bigger than meter size		
Housing Material:	316 Stainless Steel, Aluminum, PVDF		
Meter Sizes Available:	1/2" 3/4" 1" 1-1/2" 2"		
Flow Range:	1/2" (05)	1 - 10 GPM	(3.8 - 38 L/min)
	1/2" (05) PVDF only	1.2 - 12 GPM	(4.5 - 45 L/min)
	3/4" (07)	2 - 20 GPM	(7.6 - 76 L/min)
	1" (10)	5 - 50 GPM	(19 - 190 L/min)
	1-1/2" (15)	10 - 100 GPM	(38 - 380 L/min)
	2" (20)	20 - 200 GPM	(76 - 760 L/min)
Accuracy (% of Reading):	Turbine Only		Turbine w/Computer
	1/2" (05)	± 2.0%	± 1.5%
	3/4" (07)	± 1.5%	± 1.0%
	1" (10)	± 1.5%	± 1.0%
	1-1/2" (15)	± 1.0%	± 0.75%
	2" (20)	± 1.0%	± 0.75%
Repeatability:	± 0.1% (PVDF is ± 0.3%)		
Pressure Rating:			
Stainless Steel 316 SS	1,500 psi (102 bar)		
Aluminum	300 psi (21 bar)		
High Pressure 316 SS	3000 psi (207 bar)		
ANSI Flange 316 SS	Flange Rule		
Sanitary Flange 316 SS	Limited by fitting, clamp size, & temperature		
PVDF	100 psi (6.9 bar)		

Operating Temperature Range:	-40° F to 250° F (-40° C to 121° C)	
	(PVDF) -20° F to 180° F (-28° C to 82° C)	
with Display:	0° F to 140° F (-18° C to 60° C)	
Typical K-Factor :	1/2" (05)	2,500 PPG (660 Pulses/L)
	3/4" (07)	1,100 PPG (291 Pulses/L)
	1" (10)	565 PPG (149 Pulses/L)
	1-1/2" (15)	215 PPG (57 Pulses/L)
	2" (20)	100 PPG (26 Pulses/L)
Wetted Materials:	Housing:	316 Stainless Steel or Aluminum
	Bearings:	96% Alumina Oxide Ceramic
	Shaft:	Tungsten Carbide
	Rotor:	PVDF
	Rings:	316 Stainless Steel
Wetted Materials PVDF:	Housing:	PVDF (15% Carbon Fiber Filled)
	Bearings & Shaft:	98% Alumina Ceramic
	Rotor:	PVDF
	Rings:	Fluorocarbon (Optional PTFE)
Frequency Range:	1/2" (05)	42-420 Hz @ 1-10 GPM (3.8-38 L/min) / 45-450 Hz @ 1.2-12 GPM (4.5-45 L/min) (PVDF)
	3/4" (07)	37-370 Hz @ 2-20 GPM (7.6-76 L/min)
	1" (10)	47-470 Hz @ 5-50 GPM (19-190 L/min) / 45-475 Hz @ 5-50 GPM (19-190 L/min) (PVDF)
	1-1/2" (15)	36-360 Hz @ 10-100 GPM (38-380 L/min)
	2" (20)	33-330 Hz @ 20-200 GPM (76-760 L/min)
Calibration Report:	Comes standard with G2 Series meters.	
	N.I.S.T. – Certification available.	

DIMENSIONS

NOTE: Q9 Display adds 0.72 in. (18 mm) to height
Stainless Steel (SS) and SS High Pressure Models

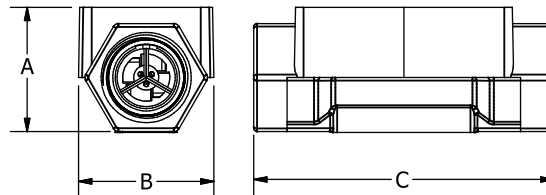
	S05 & H05 ½ in.	S07 & H07 ¾ in.	S10 & H10 1 in.	S15 & H15 1½ in.	S20 & H20 2 in.
A = Height	1.4 in. (35.6 mm)	1.6 in. (40.6 mm)	1.9 in. (48.3 mm)	2.6 in. (66.0 mm)	3.1 in. (78.7 mm)
B = Width	2.0 in. (50.8 mm)	2.0 in. (50.8 mm)	2.0 in. (50.8 mm)	2.7 in. (68.6 mm)	3.4 in. (86.4 mm)
C = Length	4.2 in. (106.7 mm)	4.3 in. (109.2 mm)	4.5 in. (114.3 mm)	5.3 in. (134.6 mm)	6.3 in. (160.0 mm)

Aluminum Models

	A05, ½ in.	A07, ¾ in.	A10, 1 in.	A15, 1½ in.	A20, 2 in.
A = Height	1.8 in. (45.7 mm)	2.0 in. (50.8 mm)	2.2 in. (55.9 mm)	2.8 in. (71.1 mm)	3.2 in. (81.3 mm)
B = Width	2.0 in. (50.8 mm)	2.0 in. (50.8 mm)	2.0 in. (50.8 mm)	2.7 in. (68.6 mm)	3.3 in. (83.8 mm)
C = Length	4.2 in. (106.7 mm)	4.3 in. (109.2 mm)	4.5 in. (114.3 mm)	5.3 in. (134.6 mm)	6.3 in. (160.0 mm)

PVDF Models

	P05, ½ in.	P10, 1 in.
A = Height	3.2 in. (81.3 mm)	3.3 in. (83.8 mm)
B = Width	2.1 in. (53.3 mm)	2.8 in. (71.1 mm)
C = Length	7.3 in. (185.4 mm)	8.1 in. (205.7 mm)



NOTE: For representation purpose only. Actual product models vary in shape, design, etc.

ANSI Flange and Sanitary Flange dimensions not shown. For those dimensions, please refer to product manuals or our website FLOMECMeters.com.

ACCESSORIES

Part No.	Description
113435-10	Conditioned Signal Module
125060-10	Pulse Out, External Power, Scaled Pulse Module
125100-10	4-20 mA Module

Part No.	Description
125260-02	90° Display Adaptor Kit
113275-10	FM Approved* Remote Kit
125206-2	1/2 in. Teflon O-Ring for PVDF Meter (2)
125206-1	1 in. Teflon O-Ring for PVDF Meter (2)

*Does not make Non-FM Approved meters FM Approved

APPROVALS



NEMA
4

IP65



G2 SERIES INTRINSICALLY SAFE

A full line of FLOMEC G2 Series Turbine Meters are available in a variety of housing materials. Rugged and dependable, the G2 Series offers:

- Stainless Steel for most water and chemical products
- Aluminum for fuels and petroleum-based products
- PVDF for aggressive chemicals

FEATURES / BENEFITS

- Meter is designed for thin fluids < 100 cP
- Modular design allows for use with Output Modules, Sensors and Remote Display Kits
- 2 Totals (Batch Total = Resettable, Total = Non-Resettable); Rate of Flow, Factory calibrated in gallons or litres. Field calibratable. Includes non-volatile totals.
- High accuracy meter
- Internal parts are simple to replace for easy maintenance
- AAA Alkaline battery life: 2 years

PRODUCT CONFIGURATION

1 PRODUCT IDENTIFIER:

G2 = Industrial Grade Flowmeters

2 TURBINE MATERIAL:

S = Stainless Steel
 A = Aluminum
 P = PVDF (1/2 in. & 1 in. only)
 X = Electronics only (For metal meters)
 Z = Electronics only (For plastic meters)

3 TURBINE SIZE:

05 = 1/2 in. 15 = 1-1/2 in.
 07 = 3/4 in. 20 = 2 in.
 10 = 1 in.

4 FITTING TYPE:

N = NPT (Female)
 I = ISO (Female) BSPT (ISO 7 Designation is RC)
 F = 150# ANSI Flange (Available on S10, S15 & S20 only)
 T = Tri-Clover® Fitting (Available on S05, S07, S10, S15 & S20 only)
 X = No Turbine Body

5 ELECTRONIC CHOICE:

Computer Display, Meter Mounted
 Q9 = Q9 2-Button Computer
 Q1 = Q9 2-Button Computer, Vertical Mount (90° Adapter)
Retrofit Computer Kit (Display Only)
 R9 = Q9 2-Button Computer Retrofit Kit (Replaces Q9 Display)
 No Electronics - Turbine Only
 XX = No Electronics - Turbine Only

6 CALIBRATION OF COMPUTER / DISPLAY:

GM = Gallons Per Minute (Gallons Default)
 LM = Liters Per Minute (Litres Default)
 XX = No Calibration

7 PACKAGING:

A = 05 Thru 10 Turbines, Turbine Only or w/Q9 Electronics
 05 Thru 20 Electronics Only (Q9 Replacement Kit or R9 Retrofit Kit)
 B = 15 & 20 Turbines, Turbine Only or w/Q9 Electronics
 05 Thru 10 Turbines w/Q1 Electronics
 C = 15 Thru 20 Turbine w/Q1 Electronics
 D = 10 Turbines with ANSI Flange Turbine Only or w/Q9, Q1 Electronics
 E = 15 & 20 Turbines with ANSI Flange Turbine Only or w/Q9, Q1 Electronics

APPLICATIONS

- Fuel products
- Monitoring clean fluids
- Plant process water
- Chemical feed lines
- Harsh chemicals (sulfuric acid and bleach)
- Batching
- Blending
- Water
- Industrial fluids
- Plating solutions
- Ammonium
- Food and beverage processing

1 2 3 4 5 6 7

--->>>> G2 S 15 N Q9 GM B

SPECIFICATIONS

Fitting Type:	NPT or ISO (Female) BSPT* (*ISO 7 designation is RC)		
	150# ANSI (Stainless Steel only)		
	Tri-Clover * (Stainless Steel only) - Clamp size is one size bigger than meter size		
Housing Material:	316 Stainless Steel, Aluminum, PVDF		
Meter Sizes Available:	1/2" 3/4" 1" 1-1/2" 2"		
Flow Range:	1/2" (05)	1 - 10 GPM	(3.8 - 38 L/min)
	1/2" (05) PVDF only	1.2 - 12 GPM	(4.5 - 45 L/min)
	3/4" (07)	2 - 20 GPM	(7.6 - 76 L/min)
	1" (10)	5 - 50 GPM	(19 - 190 L/min)
	1-1/2" (15)	10 - 100 GPM	(38 - 380 L/min)
	2" (20)	20 - 200 GPM	(76 - 760 L/min)
Accuracy (% of Reading):	Turbine Only		Turbine w/Computer
	1/2" (05)	± 2.0%	± 1.5%
	3/4" (07)	± 1.5%	± 1.0%
	1" (10)	± 1.5%	± 1.0%
	1-1/2" (15)	± 1.0%	± 0.75%
	2" (20)	± 1.0%	± 0.75%
Repeatability:	± 0.1% (PVDF is ± 0.3%)		
Pressure Rating:			
Stainless Steel 316 SS	1,500 psi (102 bar)		
Aluminum	300 psi (21 bar)		
ANSI Flange 316 SS	Flange Rule		
Sanitary Flange 316 SS	Limited by fitting, clamp size, & temperature		
PVDF	100 psi (6.9 bar)		

Operating Temperature Range:	-40° F to 250° F (-40° C to 121° C)	
	(PVDF) -20° F to 180° F (-28° C to 82° C)	
with Intrinsically Safe Display:	0° F to +129° F (-18° C to +54° C)	
Typical K-Factor :	1/2" (05)	2,500 PPG (660 Pulses/L)
	3/4" (07)	1,100 PPG (291 Pulses/L)
	1" (10)	565 PPG (149 Pulses/L)
	1-1/2" (15)	215 PPG (57 Pulses/L)
	2" (20)	100 PPG (26 Pulses/L)
Wetted Materials:	Housing:	316 Stainless Steel or Aluminum
	Bearings:	96% Alumina Oxide Ceramic
	Shaft:	Tungsten Carbide
	Rotor:	PVDF
	Rings:	316 Stainless Steel
Wetted Materials PVDF:	Housing:	PVDF (15% Carbon Fiber Filled)
	Bearings & Shaft:	98% Alumina Ceramic
	Rotor:	PVDF
	Rings:	Fluorocarbon (Optional PTFE)
	Frequency Range:	1/2" (05)
3/4" (07)		37-370 Hz @ 2-20 GPM (7.6-76 L/min)
1" (10)		47-470 Hz @ 5-50 GPM (19-190 L/min) / 45-475 Hz @ 5-50 GPM (19-190 L/min) (PVDF)
1-1/2" (15)		36-360 Hz @ 10-100 GPM (38-380 L/min)
2" (20)		33-330 Hz @ 20-200 GPM (76-760 L/min)
Calibration Report:	Comes standard with G2 Series meters. N.I.S.T. - Certification available.	

DIMENSIONS NOTE: Q9 Display adds 0.72 in. (18 mm) to height

Stainless Steel Models

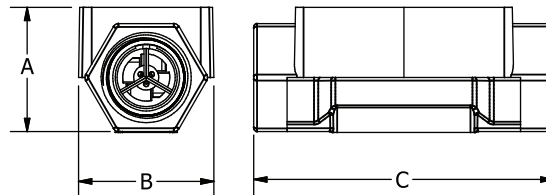
	S05, 1/2 in.	S07, 3/4 in.	S10, 1 in.	S15, 1 1/2 in.	S20, 2 in.
A = Height	1.4 in. (35.6 mm)	1.6 in. (40.6 mm)	1.9 in. (48.3 mm)	2.6 in. (66.0 mm)	3.1 in. (78.7 mm)
B = Width	2.0 in. (50.8 mm)	2.0 in. (50.8 mm)	2.0 in. (50.8 mm)	2.7 in. (68.6 mm)	3.4 in. (86.4 mm)
C = Length	4.2 in. (106.7 mm)	4.3 in. (109.2 mm)	4.5 in. (114.3 mm)	5.3 in. (134.6 mm)	6.3 in. (160.0 mm)

Aluminum Models

	A05, 1/2 in.	A07, 3/4 in.	A10, 1 in.	A15, 1 1/2 in.	A20, 2 in.
A = Height	1.8 in. (45.7 mm)	2.0 in. (50.8 mm)	2.2 in. (55.9 mm)	2.8 in. (71.1 mm)	3.2 in. (81.3 mm)
B = Width	2.0 in. (50.8 mm)	2.0 in. (50.8 mm)	2.0 in. (50.8 mm)	2.7 in. (68.6 mm)	3.3 in. (83.8 mm)
C = Length	4.2 in. (106.7 mm)	4.3 in. (109.2 mm)	4.5 in. (114.3 mm)	5.3 in. (134.6 mm)	6.3 in. (160.0 mm)

PVDF Models

	P05, 1/2 in.	P10, 1 in.
A = Height	3.2 in. (81.3 mm)	3.3 in. (83.8 mm)
B = Width	2.1 in. (53.3 mm)	2.8 in. (71.1 mm)
C = Length	7.3 in. (185.4 mm)	8.1 in. (205.7 mm)



NOTE: For representation purpose only. Actual product models vary in shape, design, etc.
ANSI Flange and Sanitary Flange dimensions not shown. For those dimensions, please refer to product manuals or our website FLOMECmeters.com.

ACCESSORIES

Part No.	Description	Part No.	Description
120077-01	FM Approved Sensor	113275-10	FM Approved Remote Kit
120077-02	ATEX Approved Sensor	125206-2	1/2 in. Teflon O-Ring for PVDF Meter (2)
125260-02	90° Display Adaptor Kit	125206-1	1 in. Teflon O-Ring for PVDF Meter (2)

APPROVALS



IP65

